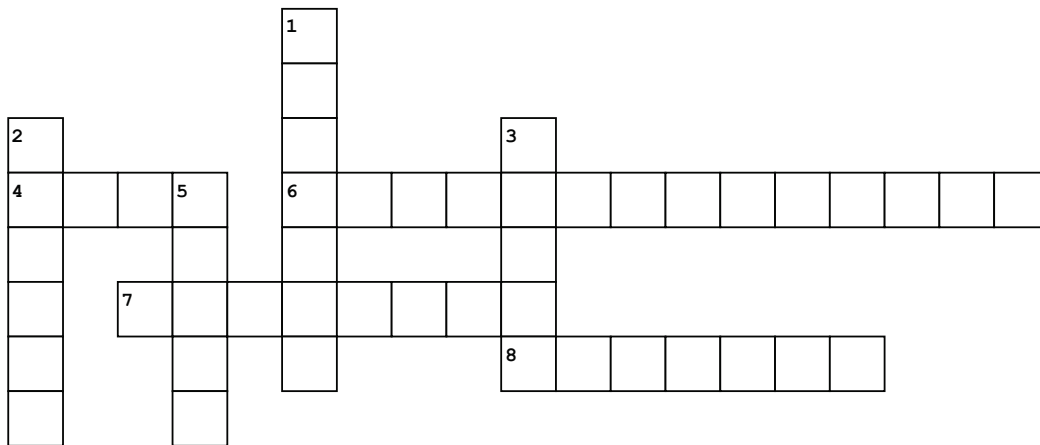


# Plant's Life



**Did you know?** A sunflower looks like one large flower, but each head is composed of hundreds of tiny flowers called florets, which ripen to become the seeds.

Can you answer these questions below and solve the crossword?



## Down

1. the centre of the flower is called \_\_\_\_\_.
2. The \_\_\_\_\_ is the most attractive part of a plant with fragrance.
3. Which part of the plant bind the soil and prevents soil erosion?
5. Which part of the plant encloses seed or seeds?

## Across

4. Which part of the plant prepares food?
6. the process of preparing food from carbon dioxide and water by using sunlight is called as \_\_\_\_\_
7. Leaves do not prepare food at night because there is no \_\_\_\_\_.
8. \_\_\_\_\_ is used in dyes, cosmetics, medicines, and food flavours.

**Answers**

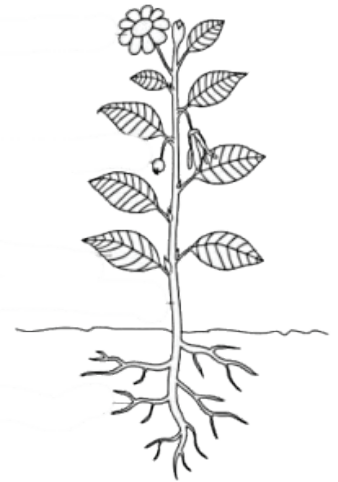
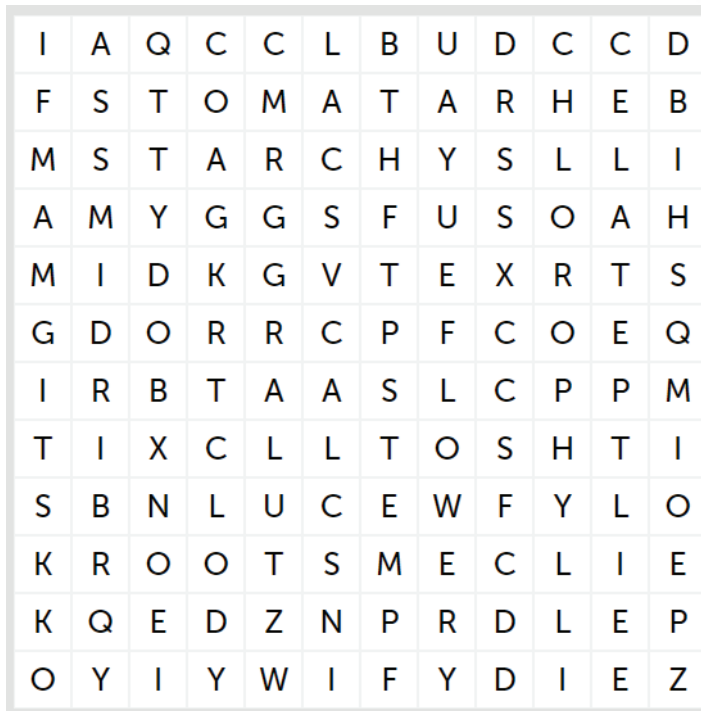
1. carpels      2. Flower      3. Roots      4. Leaf      5. Fruit

6. Photosynthesis      7. Sunlight      8. saffron

# Plant's Life

How well do you know about plants? There are 12 parts of the plants and some special plants that are hidden in the word gym.

Can you find them all?



To make it bit easier, here are some hints.

- This is the main vein that runs along the centre of the leaf and looks like ends with rib.
- Leaf has these and sounds like tomato
- Plants that have no leaves
- The excess food is changed into a substance called as? Rhymes with March

STOMATA	•	CACTUS	•	ROOTS	•
STIGMA	•	BUD	•	PETAL	•
STEM	•	STARCH	•	FLOWER	•
MIDRIB	•	SEPAL	•	CHLOROPHYLL	•

**Answer**

# S: Botany - Types of plants



Every plant completes its life cycle depending upon its surroundings as well as seed and whether it got the required nutrition to grow or not. Plants are of four types based on the category of life cycle. Match the type of plant with its description.

They have a shorter life cycle that only spans across the few weeks, they grow, reproduce and die and are found almost everywhere.

Perennial

This category corresponds to those plants that only sustain for more or less than a year. Mainly used for growing crops.

Biennial

They require two years to complete their biological cycle of growth, reproduction and then decay.

Annual

They have the longest life span of all. They continue to grow for several years. They do not have any fixed age to complete their biological cycle.

Ephemeral

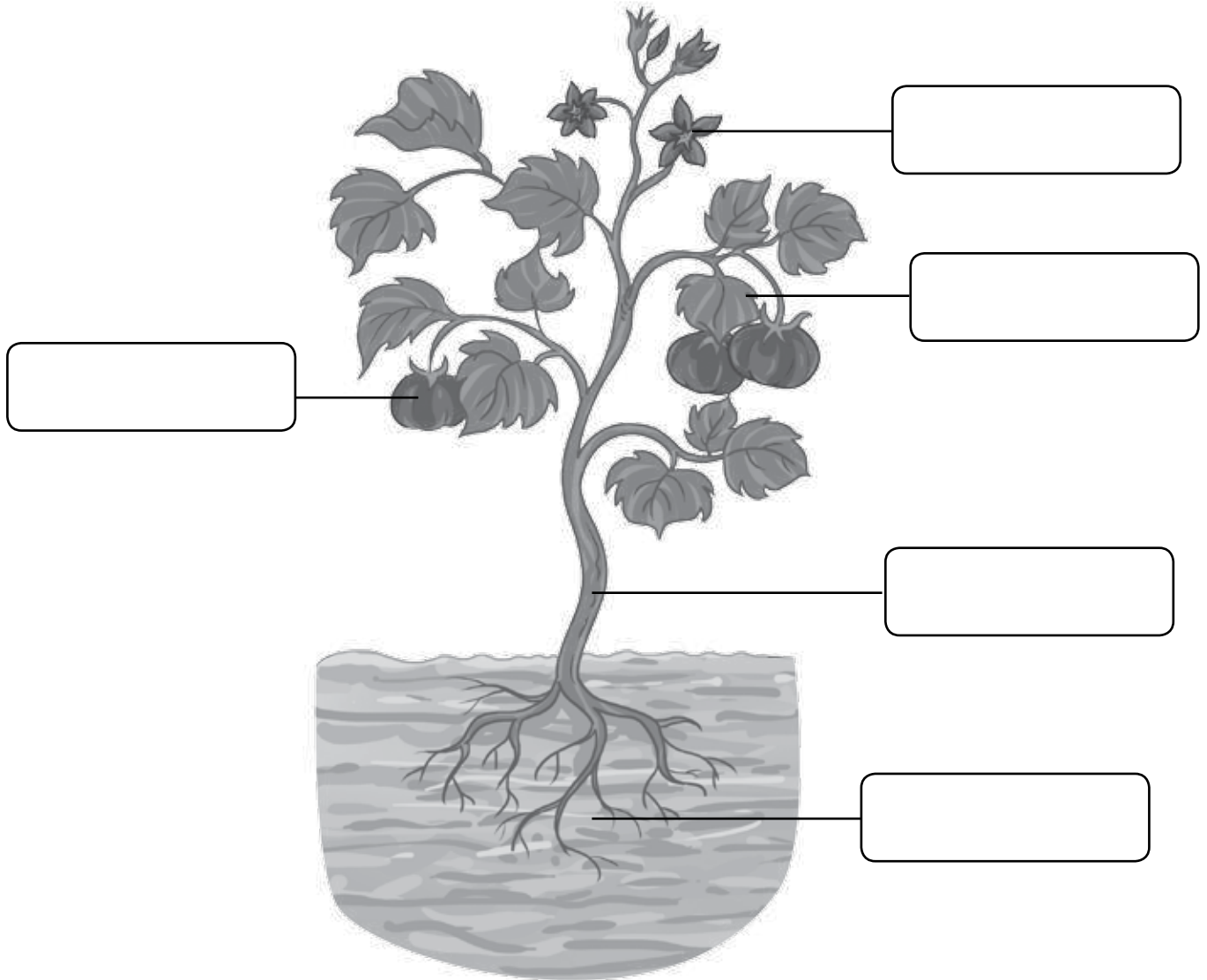
Answer Key: Ephemeral, Annual, Biennial, Perennial



## Recall and write



We see different types of plants in our day-to-day life. These plants have different parts. Each part of a plant performs a specific function. Label the parts for the below given plant. And also write the name of each part and the functions performed by it in the table given below.



Part	Function performed